

Age structure for Patagonian
Toothfish *Dissostichus eleginoides*
around the Falkland Islands:

January – December 2020



Brendon Lee

Falkland Islands Government
Directorate of Natural Resources
Fisheries Department
Stanley, Falkland Islands



AGE-2020-T00

Table of Contents

1. Introduction	2
2. Materials and methods.....	2
2.1. Data Collection	2
2.2. Preparation of otoliths	3
2.3. Reading methodology	3
2.4. Precision of the age estimates	4
2.5. Estimation of von Bertalanffy parameters.....	4
2.6. Mortality estimates.....	4
3. Results and discussion	5
3.1. Distribution of samples.....	5
3.2. Length and Age composition.....	6
3.3. Otolith interpretation.....	8
3.4. Age and growth.....	9
3.5. Mortality estimates.....	11
3.6. Precision of the age estimates	12
4. Conclusion	13
References	14

1. Introduction

The age structure in a fish population provides the basic information for mortality rates, recruitment and growth (Hussy *et al.*, 2016). These parameters are essential inputs in age-structured stock assessment models that provide the basis for management advice in many world fisheries (Payne *et al.*, 2005; Lorenzen, 2016). Due to the key role of age in stock assessment models, bias in age estimates can therefore fundamentally influence the perception of the stock and fishing mortality, resulting in erroneous predictions of stock size and related management advice.

Patagonian toothfish *Dissostichus eleginoides* is a large (>200 cm TL) benthopelagic notothenioid fish, occurring across islands, seamounts and shelf areas of the Sub-Antarctic (Collins *et al.* 2010). Its distribution spans the Antarctic Polar Front (APF) and extends north over the Patagonian Shelf in the Atlantic Ocean, off Chile in the Pacific and to 40°S in the south-western Indian Ocean (Laptikhovskiy *et al.*, 2006). Its depth range is the widest of any teleost fish, being found from 10 m to 2500 m (Péron *et al.*, 2016).

It is a species of primary importance in the Falkland Islands longline fishery due to its high commercial value and abundance with an annual total allowable catch of 1040 t. Juvenile and sub-adult Patagonian toothfish are also captured as bycatch in the finfish and squid trawl fisheries.

This annual report, presents a reliable ageing methodology for the construction of age length keys and estimation of growth and mortality parameters from Patagonian toothfish samples obtained in the Falkland Islands during 2020. It also aims to provide estimates of inter- and intra-reader bias and precision in the age estimation in order to establish the reliability of the age estimation protocol and their potential use in stock assessment and subsequent management advice.

2. Materials and methods

2.1. Data Collection

Patagonian toothfish were sampled by scientific observers and other scientific staff of the Falkland Islands Government Fisheries Department. Data were collected on board the licensed longliner and commercial fishing vessels operating bottom trawls under various

license types. In addition, data were collected on board RV 'Castelo' operating bottom trawls during research surveys.

Randomly sampled Patagonian toothfish were measured to the nearest cm (TL), sexed and the stage of reproductive maturity assigned according to an eight-stage scale (I and II – immature, III and IV – maturing, V – mature, VI – running, VII – post spawning and VIII – spent). Otoliths were stored in paper envelopes in four quarterly time periods (A: Jan – Mar, B: Apr – Jun, C: Jul – Sep and D: Oct – Dec).

Otoliths for ageing are selected to cover the length distribution of sampled fish from each quarterly otolith collection. This ensures that sufficient otoliths are aged for all lengths on a temporal basis.

2.2. Preparation of otoliths

Otoliths were embedded in rows of five in blocks of clear epoxy resin and left to set for 24 hours. Fully dried blocks are ground in order to provide smooth linear surfaces and the nucleus marked using a pencil. This is undertaken in order to guide the cutting angle and ensure that sections are cut precisely at right angles. Resin blocks were subsequently sectioned using a Buehler Isomet Low Speed Saw. Between two and six sections of 0.35mm were taken per resin block and mounted on microscope slides under coverslips with clear epoxy resin.

2.3. Reading methodology

Sections were viewed under reflected light at 20 to 40 times magnification. All sections of each row of otoliths were inspected and the section closest to the primordium was used for subsequent ageing.

Following previous work on age estimation of this species, the sector from the primordium to the proximal edge of the section, on the ventral side of the sulcus was chosen as the area in which to count increments. However, for some preparations, increments formed on the dorsal side were at least as clear as those on the ventral side. Each otolith was aged at least twice by the primary reader. For otoliths where the first two readings did not agree, a third reading was undertaken. All counts of annuli were made without prior knowledge of fish size, date of capture or previous age estimates.

2.4. Precision of the age estimates

Repeated readings of the same otoliths provide a measure of intra-reader or inter-reader variability. They do not validate the assigned ages but provide an indication of size of the error to be expected with a set of age estimates, due to variation in interpretation of an otolith. Beamish and Fournier (1981) have developed an index of average percent error (IAPE), which has become a common method for quantifying this variation. The IAPE is calculated as:

$$APE = 100 \left[\frac{1}{N} \sum_{j=1}^N \left(\frac{1}{R} \sum_{i=1}^R \frac{|X_{ij} - X_j|}{X_j} \right) \right]$$

Where N is the number of fish aged, R is the number of times fish are aged, X_{ij} is the i th determination for the j th fish, and X_j is the average estimated age of the j th fish.

An IAPE was calculated for all repeated readings undertaken by the primary reader.

2.5. Estimation of von Bertalanffy parameters

A von Bertalanffy growth function was fitted to the observed length-at-age data:

$$L_t = L_{\infty} (1 - e^{-K(t-t_0)})$$

where L_t is length (TL in cm) at time t (years), L_{∞} the asymptotic length, K is the rate (year^{-1}) by which L_{∞} is approached, and t_0 is the theoretical age at length zero. Growth curves were fitted for males and females by non-linear least-square regression in R (R Core Team, 2021). Likelihood ratio tests were used to estimate whether a combined sex growth model or sex-separated models better described the length-at-age data. A parametric bootstrapping procedure with 1,000 iterations was employed to estimate 95% confidence intervals for final parameter estimates (Baty *et al.*, 2015).

2.6. Mortality estimates

Catch-at-age frequency plots for each sex and fishery were obtained from representative length frequency data, by applying age-length keys derived from the aged otoliths (Ogle *et*

al., 2018). The annual mortality rate (A) and instantaneous rate of total mortality (Z) were estimated from catch-at-age data on the descending limb of the catch-curve using a weighted regression to reduce the relative impact of older ages with fewer fish on Z . Initial ascending points representing fish that were not fully recruited to the fishery were excluded from the analysis.

3. Results and discussion

3.1. *Distribution of samples*

Biological information was obtained from a total of 7015 Patagonian toothfish samples. Of these, 3357 and 3658 were sampled from within the trawl and longline based fisheries, respectively.

In the trawl-based fisheries, Patagonian toothfish were sampled from across the shelf to the south and west of the Falkland Islands at depths between 119 and 490 m depth (Mean = 246 m; Figure 1). In the longline fishery, Patagonian toothfish were sampled at depths between 280 and 2100 m (mean = 1378 m) predominantly to the south over the Burdwood Bank, and to the east of the Falkland Islands (Figure 1).

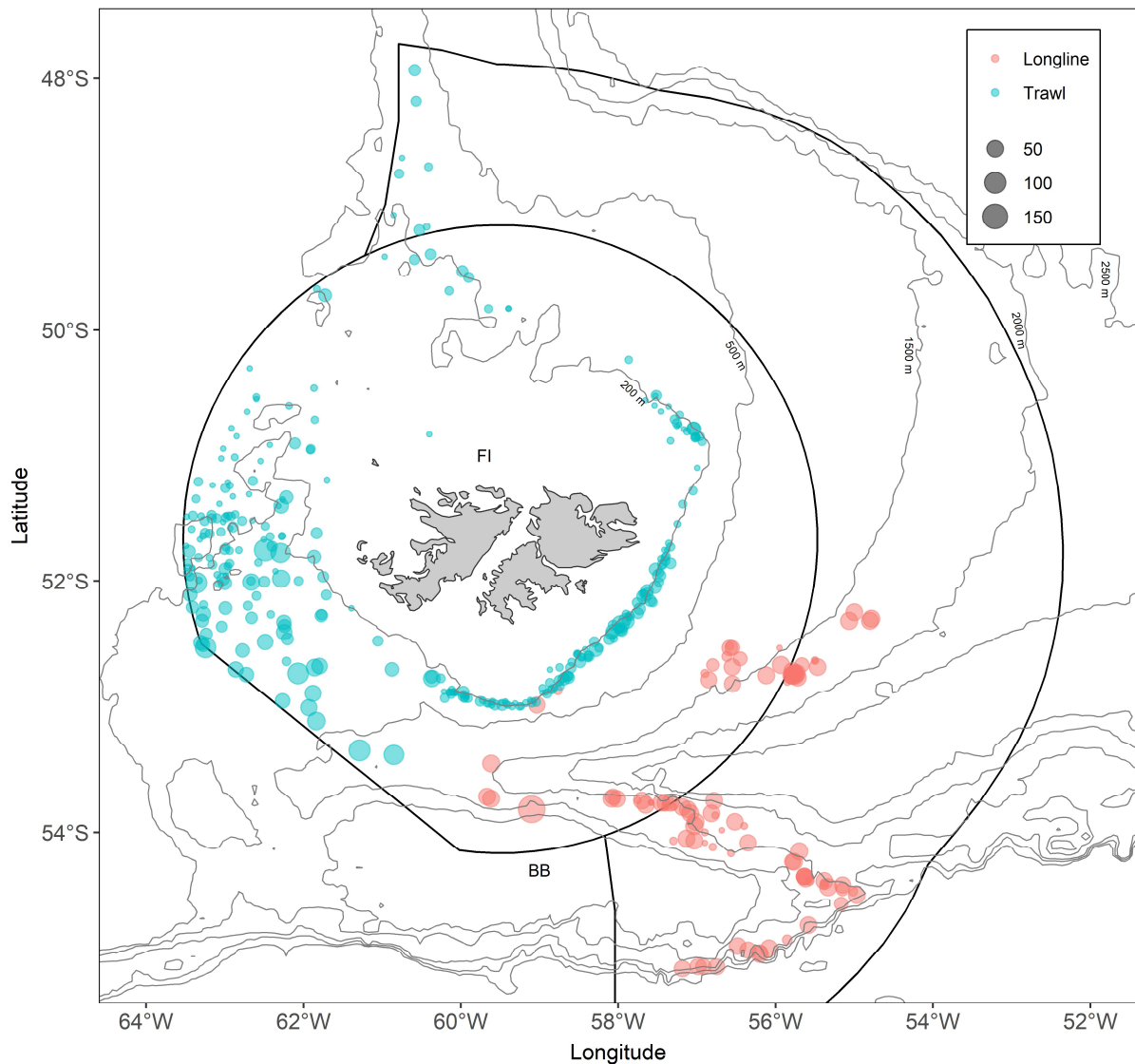


Figure 1: Positions from which Patagonian toothfish were sampled around the Falkland Islands during 2020 (n=7015).

3.2. Length and Age composition

In the trawl-based fisheries, lengths ranged between 5 and 104 cm TL (mean \pm s.d. = 49.4 \pm 14.1 cm). The distribution showed a clear modal peak occurring at 26 cm TL, reflecting newly recruited (age-1) fish (Figure 2). The length frequency distribution was skewed to the right, displaying a multimodal distribution reflecting older cohorts of juvenile and sub-adult fish inhabiting the shallow waters wherein trawl-based fisheries occur. The trawl-based fisheries predominantly captured fish aged less than six years (Figure 3).

The longline-based fishery appeared to target a different part of the Patagonian toothfish stock with lengths ranging from 40 to 221 cm, with a clear modal peaks occurring between 70 and 76 and 96 to 110 cm TL for both male and female fish (Figure 2). These modal peaks of longline caught Patagonian toothfish appeared to reflect fish between 5 and 7 years old with the larger modal peak reflecting older fish between 11 and 13 years (Figure 3). Ages ranged from 1 to 37 years for females and 1 to 35 years for males. The majority of Patagonian toothfish being caught within the longline fishery were older than 5 years.

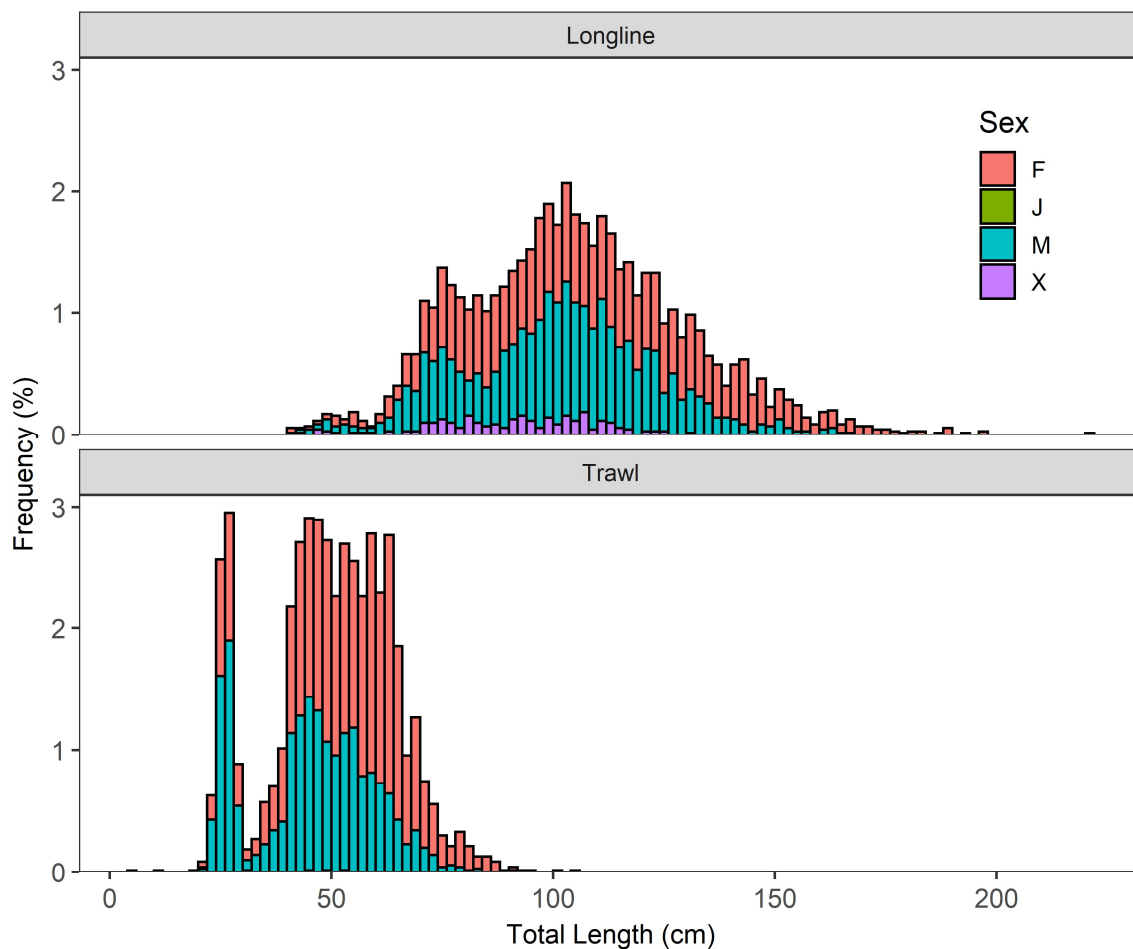


Figure 2: Length frequency distribution for Patagonian toothfish sampled in the longline (n=3658) and trawl-based (n=3357) fisheries.

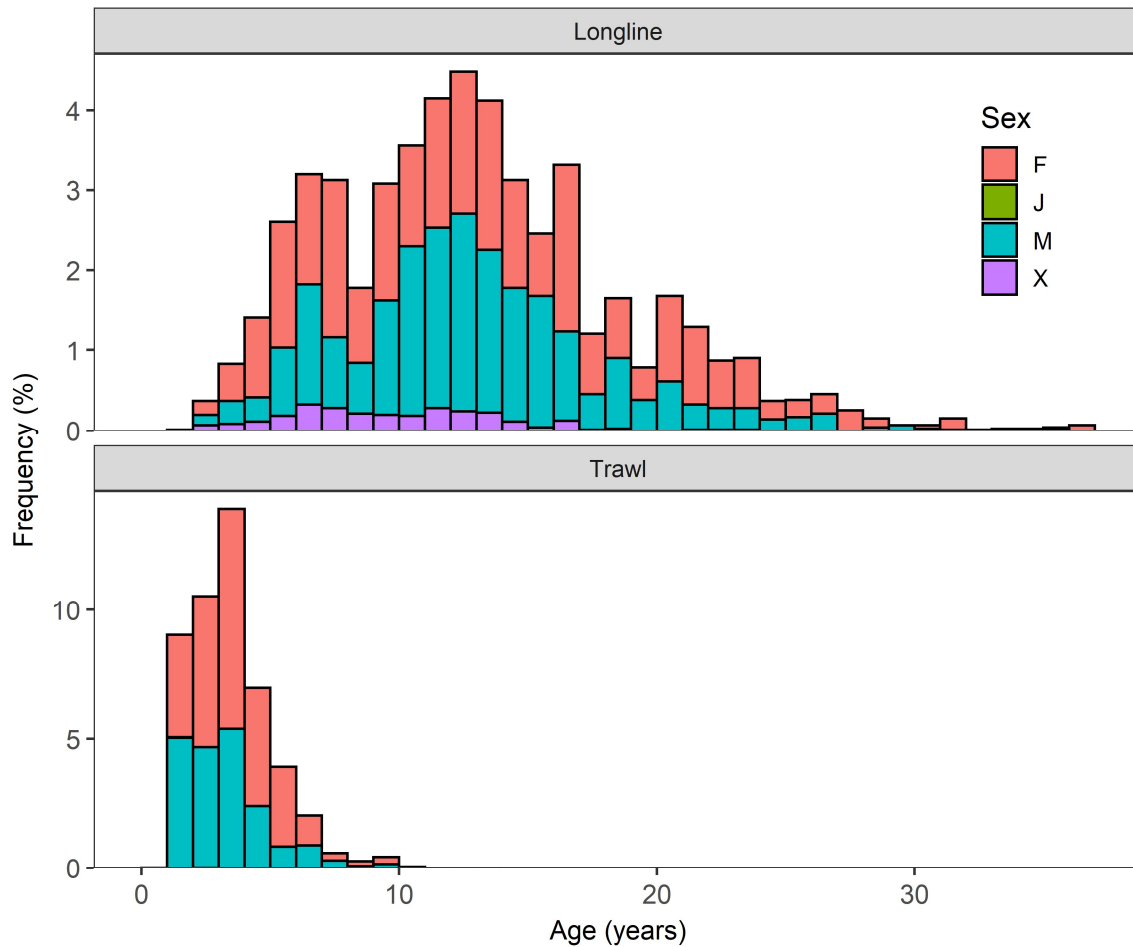


Figure 3: Age frequencies estimated from the total sampled catch of Patagonian toothfish in the longline (n=3068) and trawl-based (n=1781) fisheries.

3.3. *Otolith interpretation*

The clarity of zonation patterns in Patagonian toothfish otoliths varied greatly with complex patterns. Some otoliths displayed distinct banding with distinct wide annuli nearer to the core, becoming increasingly narrow with age (Figure 4A). Frequently, otoliths displayed a distinct zonal structure with a dark region closer to the core, a transition zone, followed by a more translucent region extending to the otolith margin (Figure 4B). The inner dark zone of the otoliths usually contained between 3 and 5 annuli, with this region often containing macrostructures considered to be false rings (also noted by Horn, 2002). The outer, translucent region of the otolith usually consisted of narrow yet regular annuli. In some otoliths annuli within this region could barely be discernible due to the extent of translucence. Interpretation of the banding structure across the transition zone was often complex with variable rates of change from the wider annuli present in the dark zone compared to the narrow banding structure observed in the outer translucent region of the otolith.

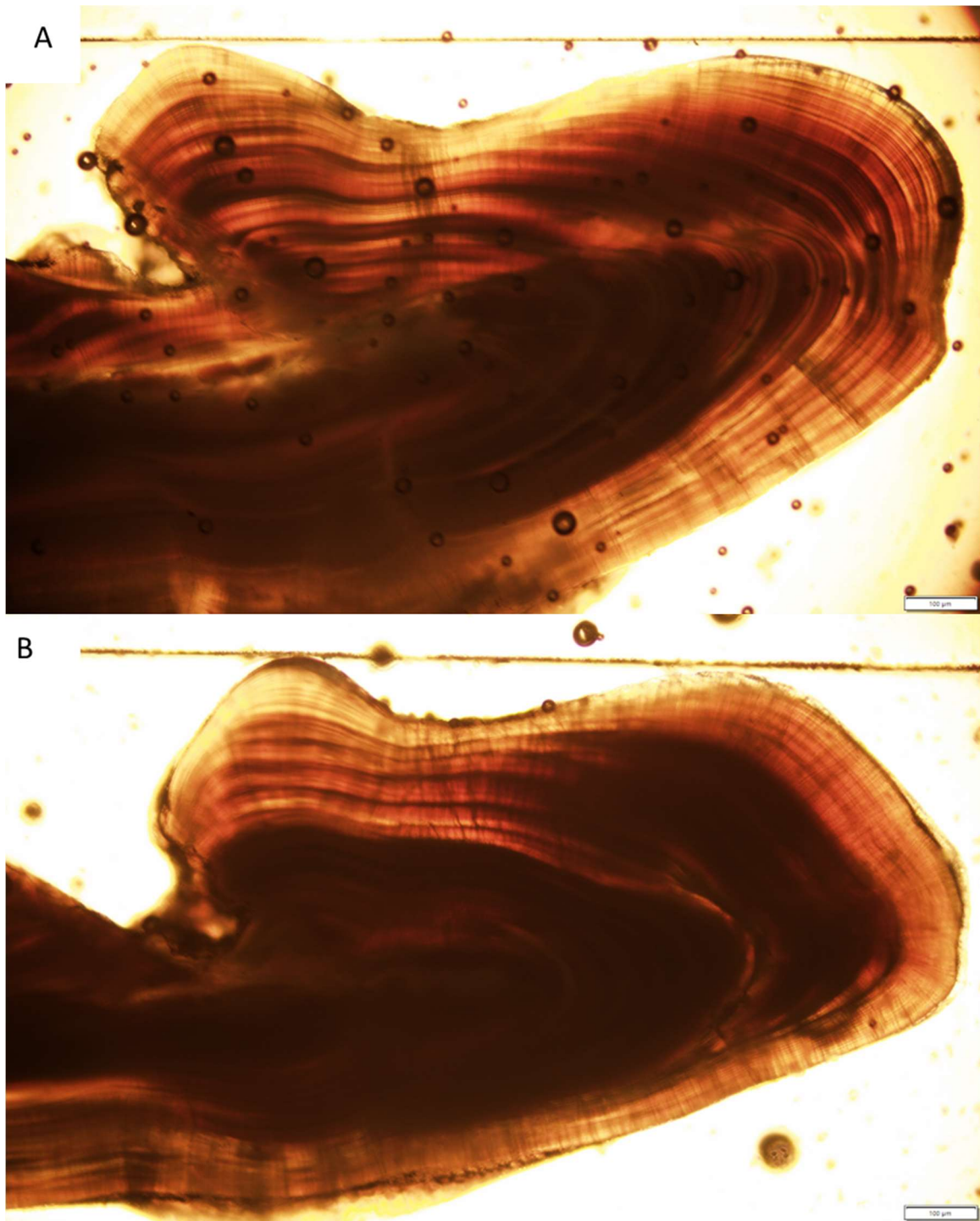


Figure 4: Sectioned otolith from (A) a 93 cm and (B) 88 cm male Patagonian toothfish with estimated ages of 10 and 11 years, respectively.

3.4. *Age and growth*

Likelihood ratio tests indicated significant differences in growth between male and female Patagonian toothfish ($\chi^2 = 78.76$; $P < 0.01$; AIC = 7017.34). Likelihood ratio tests indicated

significant differences in the L_{∞} ($\chi^2 = 5.38$; $P = 0.02$; $AIC=7020.72$) parameter estimates for male and female fish.

Calculated von Bertalanffy growth parameters and their 95% confidence intervals for male and female fish are presented in Table 1 and Figure 5. Female fish generally grew to a larger size and age compared to males.

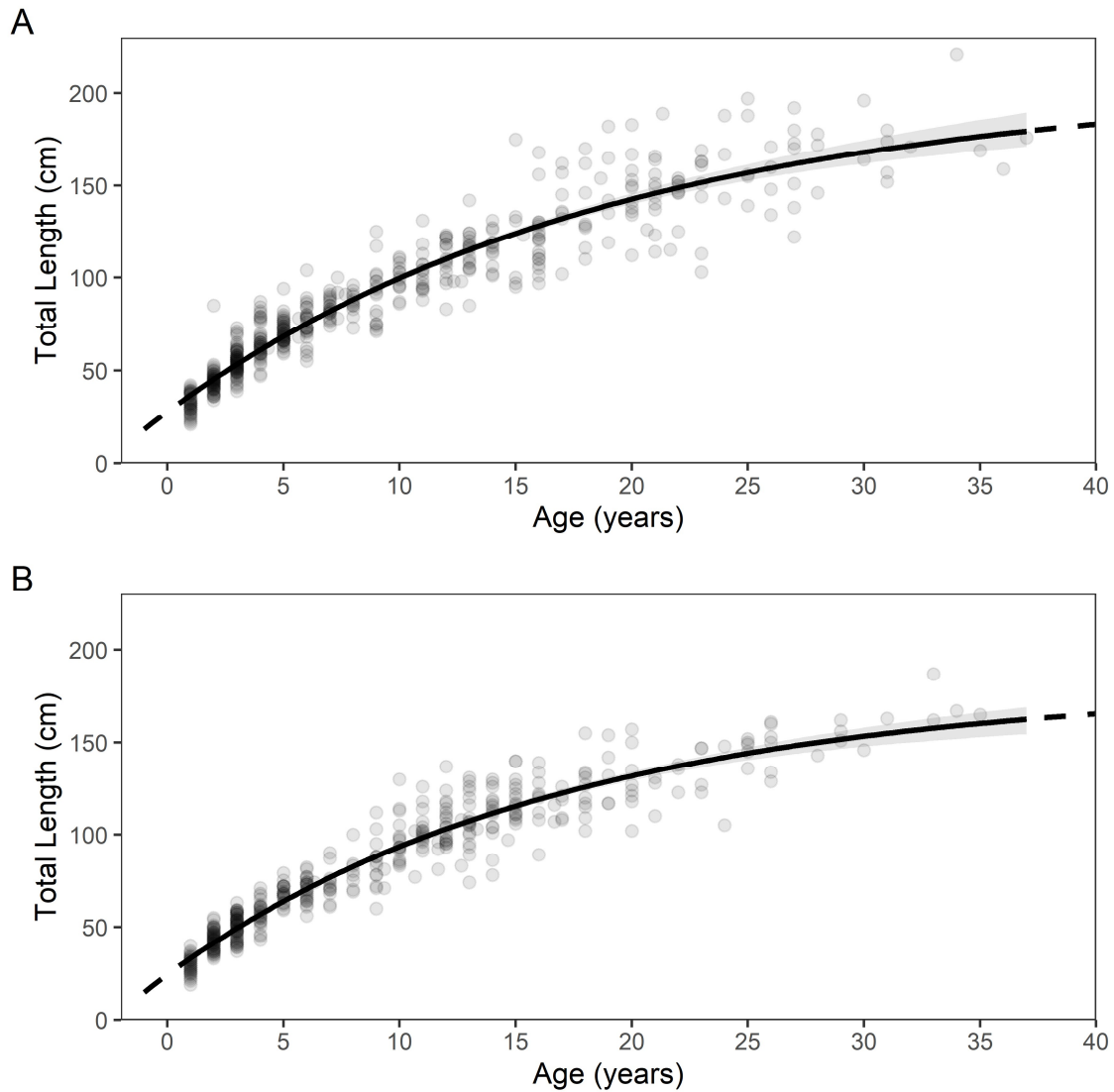


Figure 5: Length versus age with superimposed best-fit von Bertalanffy growth model and 95% confidence bands for (A) female (n=498) and (B) male (n=407) Patagonian toothfish sampled during 2020.

Table 1: Von Bertalanffy parameters (with 95% confidence intervals) for Patagonian toothfish sampled during 2020.

Parameters	Estimate	LCI	UCI
Females			
L_{∞}	205.70	187.73	232.32
K	0.052	0.041	0.062
t_0	-2.79	-3.41	-2.33
n	498		
Males			
L_{∞}	180.56	166.03	197.49
K	0.058	0.048	0.069
t_0	-2.47	-2.97	-2.04
n	407		

3.5. Mortality estimates

The threshold ages for the mortality estimates for Patagonian toothfish were age-1 for both male and female fish, respectively (Figure 6). The mortality estimates obtained from the catch curves did not appear to differ greatly between sexes (Table 2, Figure 6).

Table 2: Estimates of total annual mortality rate (A) and instantaneous total mortality rate (Z) for Patagonian toothfish using the catch-curve (regression) method.

Parameter	Estimate	Std. Error	95% LCI	95% UCI
Females				
A	13.14	NA	11.49	14.76
Z	0.14	0.0093	0.12	0.16
Males				
A	13.56	NA	11.48	15.59
Z	0.15	0.012	0.12	0.17
Combined				
A	14.40	NA	12.83	15.93
Z	0.16	0.0089	0.14	0.17

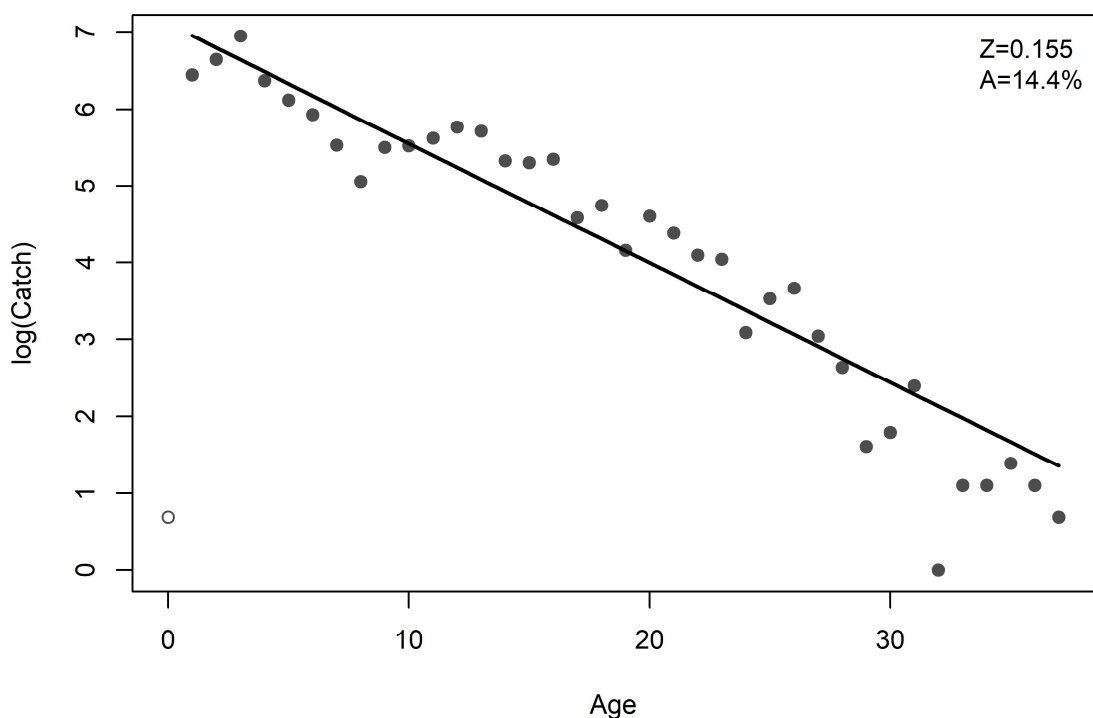


Figure 6: Catch at age for Patagonian toothfish sampled from around the Falkland Islands. The solid points were used to compute the regression-based estimates of A and Z.

3.6. Precision of the age estimates

The percentage agreement table indicates that multiple estimates of ages by the primary reader agreed for 58.59 to 80.33% of the fish otoliths, while 11.85 and 25.11% differed by one year (Table 3). The APE was between 2.11 and 4.32% for and the ACV was 2.98 to 6.11% (Table 4). These indicate that ageing precision was relatively high in Patagonian toothfish.

Table 3: Percentage table of raw differences between multiple readings of Patagonian toothfish otoliths (n=495).

	Age difference (%)						
	0	1	2	3	4	5	6+
Age1 v. Age 2	52.53	29.49	9.49	4.24	2.02	0.81	1.42

Table 4: Precision indices for age estimates of Patagonian toothfish. ASD = The average (across all fish) standard deviation of ages within a fish; ACV = The average (across all fish) coefficient of variation of ages within a fish using the mean as the divisor. AAD = The average (across all fish) absolute deviation of ages within a fish; APE = The average (across all fish) percent error of ages within a fish using the mean as the divisor.

n	R	Agreement (%)	ASD	ACV	AAD	APE
920	2	52.53	0.59	7.79	0.42	5.51

4. Conclusion

Results of the current study provide biological parameters for Patagonian toothfish in the Falkland Islands for 2020. Our findings indicate that the prescribed ageing protocol provides a reliable method for age estimation for the successful application of empirical age-length keys for the assessment of the Patagonian toothfish stock. Nonetheless, difficulties remain in interpreting patterns of annuli formation.

References

- Baty, F., Ritz, C., Charles, S., and Brutsche, M. 2015. A Toolbox for Nonlinear Regression in R: The Package nlstools. *Journal of Statistical Software*, 66.
- Beamish, R. J., and Fournier, D. A. 1981. A method for comparing the precision of a set of age determinations. *Canadian Journal of Fisheries and Aquatic Sciences*, 38: 982–983.
- Horn, P. L. 2002. Age and growth of Patagonian toothfish (*Dissostichus eleginoides*) and Antarctic toothfish (*D. mawsoni*) in waters from the New Zealand subantarctic to the Ross Sea, Antarctica. *Fisheries Research*, 56: 275–287.
- Hussy, K., Radtke, K., Plikshs, M., Oeberst, R., Baranova, T., Krumme, U., Sjoberg, R., *et al.* 2016. Challenging ICES age estimation protocols: Lessons learned from the eastern Baltic cod stock. *ICES Journal of Marine Science*, 73: 2138–2149.
- Laptikhovskiy, V. V., Arkhipkin, A. I., and Brickle, P. 2006. Distribution and reproduction of the Patagonian toothfish *Dissostichus eleginoides* Smitt around the Falkland Islands. *Journal of Fish Biology*, 68: 849–861.
- Lorenzen, K. 2016. Toward a new paradigm for growth modeling in fisheries stock assessments: Embracing plasticity and its consequences. *Fisheries Research*, 180: 4–22.
- Ogle, D. H., Wheeler, P., and Dinno, A. 2018. FSA: Fisheries Stock Analysis. Version 0.8.22.9000. URL: <https://github.com/droglenc/FSA>. <https://github.com/droglenc/FSA>.
- Payne, A. G., Agnew, D. J., and Brandão, A. 2005. Preliminary assessment of the Falklands Patagonian toothfish (*Dissostichus eleginoides*) population: Use of recruitment indices and the estimation of unreported catches. *Fisheries Research*, 76: 344–358.
- Péron, C., Welsford, D. C., Ziegler, P., Lamb, T. D., Gasco, N., Chazeau, C., Sinègre, R., *et al.* 2016. Modelling spatial distribution of Patagonian toothfish through life-stages and sex and its implications for the fishery on the Kerguelen Plateau. *Progress in Oceanography*, 141: 81–95.
- R Core Team. 2021. R: A Language and Environment for Statistical Computing. Vienna, Austria. <https://www.r-project.org/>.