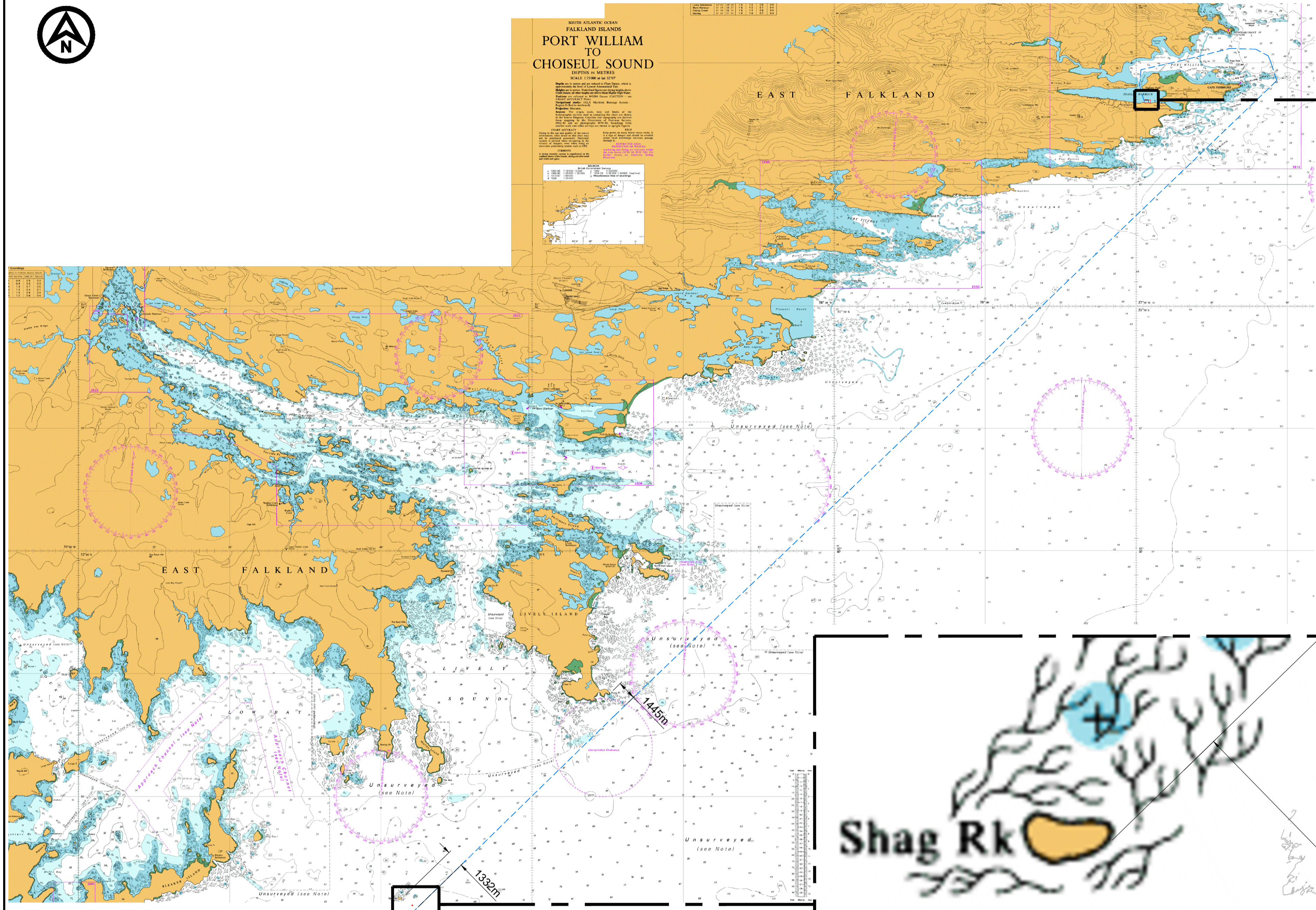
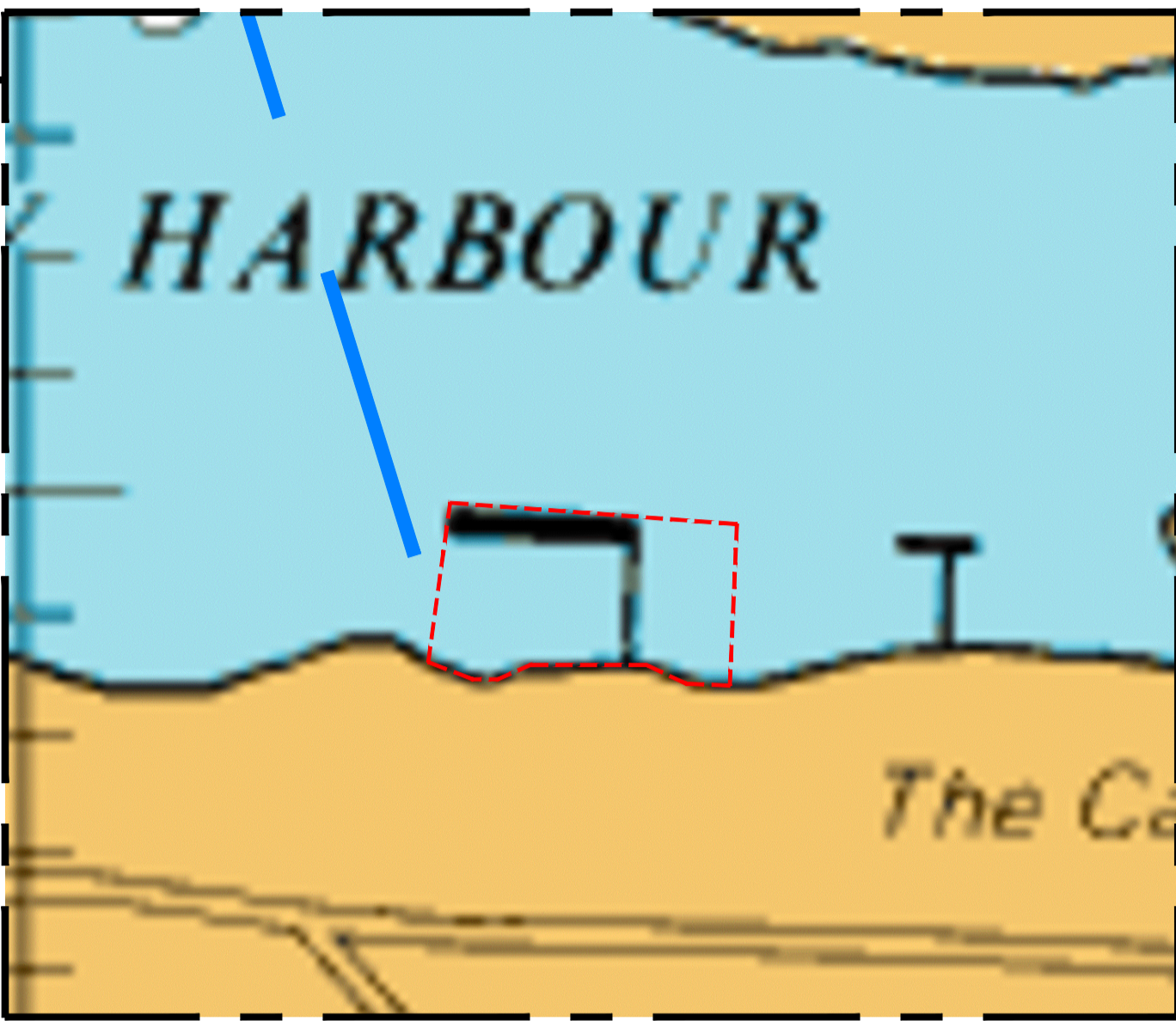




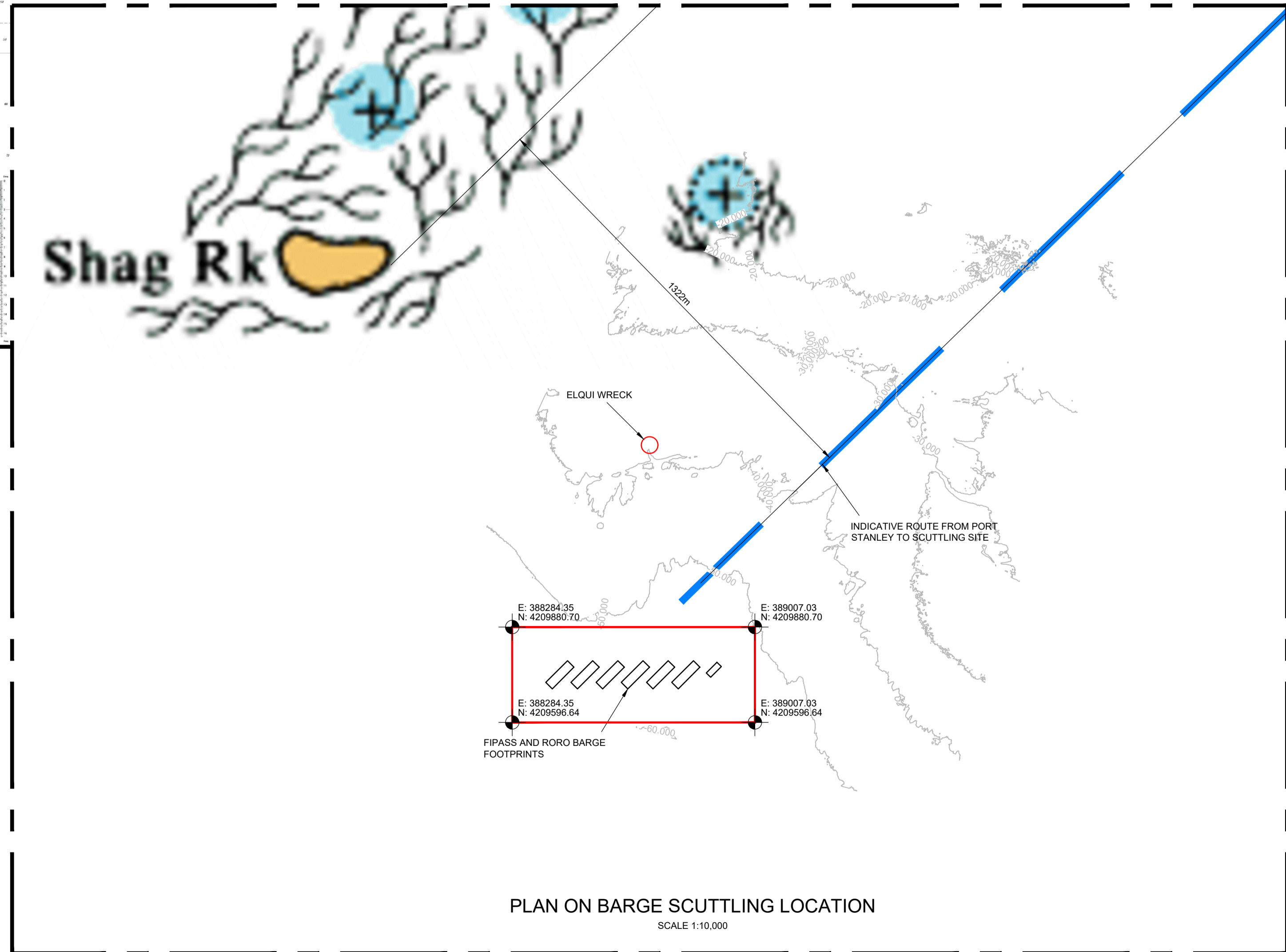
SHORE HEIGHTS OF THE
FALKLAND ISLANDS
**PORT WILLIAM
TO
CHOISEUL SOUND**
SOUNDINGS IN METRES
Scale 1:100,000
Published in 1998 and revised in 2007. This chart is a revision of the 1998 edition. It shows the results of a hydrographic survey conducted in 2007. The chart is based on the WGS84 datum. The chart is intended for use in the Falkland Islands and the surrounding waters. It is not to be used for navigation in other areas. The chart is the property of the Hydrographic Office of the United Kingdom. It is not to be reproduced, stored in a retrieval system, or transmitted in any form or by any means, electronic, mechanical, photocopying, recording, or by any information storage and retrieval system, without the prior written permission of the Hydrographic Office of the United Kingdom.



PLAN ON ROUTE TO BARGE SCUTTLING LOCATION
SCALE 1:200,000



PLAN ON BARGE SCUTTLING LOCATION
SCALE 1:10,000



PLAN ON BARGE SCUTTLING LOCATION
SCALE 1:10,000

NOTES

1. ALL DIMENSIONS ARE IN MILLIMETRES UNLESS NOTED OTHERWISE.
2. ALL LEVELS ARE IN METRES TO CHART DATUM (mCD) UNLESS NOTED OTHERWISE.
3. ALL COORDINATES RELATIVE TO WGS84 UTM ZONE 21S.

LEGEND

- ROUTE CORRIDOR TO SCUTTLING SITE
- SCUTTLING SITE LOCATION
- AREA FOR TEMPORARY BALLASTING OF BARGES TO THE SEABED FOR MANAGEMENT OF MARINE I.N.S.

REV	DATE	DESCRIPTION	BY	CHK	APP
P01	08.07.22	FOR APPROVAL	CH	DP	RCBP

REVISIONS

CLIENT



PROJECT

NEW PORT FACILITY AT THE
FALKLAND ISLANDS

TITLE

BARGE SCUTTLING LOCATION
PLAN



DRAWN	CH	CHECKED	DP	APPROVED	RCBP
DATE	30.06.22	SCALE	AS SHOWN	RHDHV DRAWING No.	

BAM DRAWING No.	SUITABILITY	REVISION
PB7829-RHD-ZZ-ZZ-DR-Z-5021	S4	P01